

COCKROACHES

The kinds of cockroaches most commonly found in and around Florida homes are the Florida Woods Roach, American ([Figure 1](#)), smokybrown ([Figure 2](#)), brown ([Figure 3](#)), Australian ([Figure 4](#)), German ([Figure 5](#)) and Asian. The smallest cockroaches, the German, Asian, and brownbanded ([Figure 6](#)), are close to the same size and the adults are seldom more than 5/8" long. The larger cockroaches, the American, Australian, brown, and the smokybrown, are 1 1/4" - 2" long and are often called palmetto bugs. Though they are generally found outdoors, they can become an indoor problem when they migrate or are carried indoors. The largest cockroach, the Florida woods roach, will also enter dwellings from the outside or from beneath the house. Outdoor cockroaches do not survive well indoors and many times people overreact to the presence of these cockroaches. Often, removal of these outdoor cockroaches from the house is all that is needed for control.



Figure 1. American cockroach (actual size, 1 1/2").



Figure 2. Smokybrown cockroach (actual size, 1 3/4").

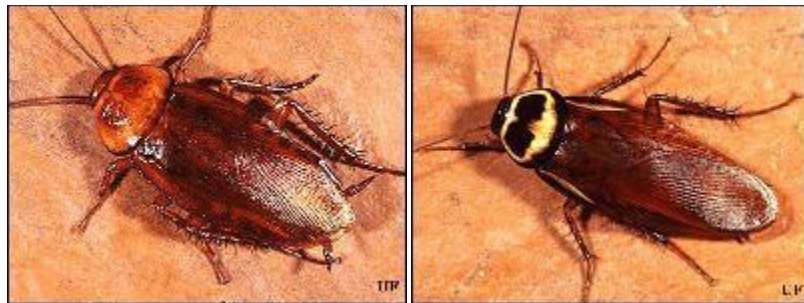


Figure 3. Brown cockroach

Figure 4. Australian cockroach



Figure 5. German cockroach (actual size 5/8").



Figure 6. Brownbanded cockroach (actual size, 3/4").

The Asian cockroach ([Figure 7](#)) looks very much like a German Cockroach, except it flies. Asian cockroaches are attracted to the lights in your home. They will fly to porch lights and find their way inside. Once inside, however, their survival is poor like other outdoor cockroaches.



Figure 7. Asian cockroach (actual size 5/8").

Prevention and Sanitation

Successful cockroach control requires prevention and sanitation. Vacuuming will eliminate cockroach skins and feces that cause cockroach allergies. Cockroach feces also contains a chemical (aggregation pheromone) that attracts cockroaches to an area. Eliminating the cockroach feces by scrubbing with hot, soapy water will decrease the amount of aggregation pheromone available to attract cockroaches to the area.

Prevention and sanitation can be divided into four categories: exclusion and elimination of food, water, and harborage. Following the recommendations in the four categories will likely eliminate the most important factors that affect cockroach establishment.